

GEARS does not endorse new products but makes this new information available to readers. If you have a new product, please email the press release information with applicable digital photo or drawing to fpasley@atra.com or send by mail to GEARS, 2400 Latigo Avenue, Oxnard, CA 93030.

SPX Sells Filtran to Madison Capital

SPX Corporation announced recently that it has entered into an agreement to sell its interests in Filtran to Madison Capital Partners.

According to SPX Filtran President Brett Wall, customers shouldn't expect to notice any difference in the way the two companies interact. "Going forward, it is our commitment to maintain the current business relationships. We anticipate that all current Filtran locations will continue to operate as they have in the past, providing the industry-leading filtration products that you have come to expect from Filtran."

Should you have any questions in the interim, contact your current sales or customer service representative, or you can visit SPX Filtran on line at www.spxfiltran.com.

Sonnax Appointed Exclusive Global Supplier of Power Train Savers®



Sonnax Power Train Savers protect drivetrains from over-torque.

Sonnax Industries has been appointed the exclusive global supplier of Power Train Savers®, a unique drivetrain protection device used in automotive, truck, marine and industrial applications.

Sonnax Power Train Savers offer inexpensive yet dependable protection against overtorque damage that can ruin differentials, gears, axles and driveshafts. Power Train Savers are offered in a variety of sizes for off-road consumer vehicles; light, medium and heavy-duty trucks and construc-

tion vehicles; as well as industrial and marine applications. Typical commercial applications include waste hauling and cement trucks, construction vehicles and mining, petroleum and forestry equipment.

Sonnax is a diversified supplier of specialized drivetrain products to the automotive and commercial vehicle industries, and to industrial sectors using drivetrain technology. The company designs, manufactures and distributes replacement components for automatic transmissions, torque converters, driveshafts and related products worldwide.

"Power Train Savers address a substantial void in the aftermarket," said Tommy Harmon, Sonnax president and CEO. "There are so many vehicles that experience costly driveline damage due to overtorque. Power Train Savers is a simple and cost-effective means of protection. They're a natural addition to our drivetrain products and we're excited to introduce them to the aftermarket."

For more information on Sonnax Power Train Savers, call (800) 843-2600 or visit www.Sonnax.com/powertrain.php.

CORTECO Introduces New Kit for Chrysler 62TE 6-Speed

Chrysler 62TE Six-Speed



CORTECO is pleased to announce the availability of overhaul kit 2541, which covers the 6-speed, front wheel drive Chrysler 62TE transmission.

Chrysler first introduced the 62TE in 2007 in the 4.0L Pacifica and the 3.5L

Sebring. In 2008, this unit was used in the 3.8/4.0L Town & Country, the 3.5L Dodge Avenger and the 3.8/4.0L Grand Caravan. It has also been incorporated into the new 2009 3.5L Dodge Journey.

Featured Components

TransTec® Number	Description
B37097	Front Seal
B29952	Axle Seal, Left & Right
B23505	Pump Lathe Seal
3528	Sealing Ring Kit

For more information on this or any other TransTec kits, visit them on line, at www.TransTec.com.

Alto Announces New Contract with Lockheed Martin

Alto Products Corporation is pleased to announce a new contract with Lockheed Martin.

"Supplying Lockheed Martin with their clutch and brake plates requirements for their recently awarded contract to supply the US military is a great opportunity and at the same time a daunting task," stated Randy Sowers, vice-president of sales at Alto. "Working with a US government prime contractor like Lockheed Martin has enabled us to expand our sales to many military repair depots around the world."

Shinora Redmond, manager of government sales at Alto Products, said "The opportunity to provide our products to a prime government contractor such as Lockheed Martin is an immeasurable accomplishment for Government Sales here at Alto Products Corp. I'm excited about challenges and the successes of this contract; we've opened the door to be a part of the largest contracts awarded by the Defense Logistics Agency."

Alto Products is the oldest and largest, independently owned-and-operated clutch manufacturer in the world. Alto has manufactured over a billion clutches over the last 50 years for automotive, high performance, heavy duty,

marine, and motorcycle applications. Corporate headquarters are located in Alabama and the company operates three US manufacturing plants, four North American distribution facilities, and international offices in Mexico, The Netherlands, UAE, India, China, Taiwan and Australia.

For more information please visit www.altoUSA.com.

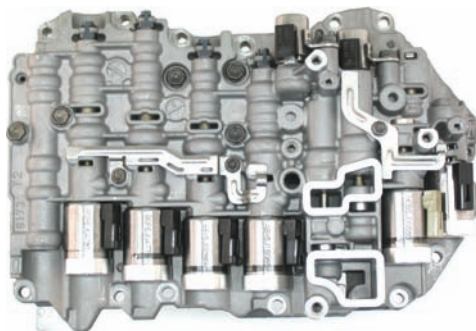
ETE Announces Exclusive C.A.R.S. System

ETE REMAN's innovative team of engineers has revolutionized the quality control of its remanufactured transmissions with its exclusive C.A.R.S. System (Computer Applied Real-World Simulation).

C.A.R.S. is the only technology available to test automatic transmissions under real-world driving conditions (load, shift times, acceleration and temperature) and reports gear ratio changes measured across time. As a result, ETE REMAN transmissions work when you install them, just like you want them to.

If you'd like to learn more contact the ETE REMAN Customer Loyalty Department by calling 1-800-934-9479, or visit them on line at www.etereman.com.

Valve Body Pro Introduces VW Beetle, Mini Cooper 09G/TF-60SN Valve Bodies



Valve Body Pro is pleased to introduce the newest in its long line of remanufactured valve bodies. The 09G/TF-60SN valve body fits the VW Beetle and the Mini Cooper.

These valve bodies are remanufactured to eliminate all these common complaints:

- Low or slow line rise
- Flared or bind on shift
- Hot delay or bang drive engagement
- Harsh up shifts
- Coast down shift clunk or bump
- Excessive TCC slippage

For more information, visit www.valvebodypros.com or call, toll free, 1-877-611-7767.

Certified Introduces New Stock Distributor

Certified Transmission is proud to introduce their newest stocking dealer, Auto Dynamic Engine Rebuilders, in Casper, Wyoming. They'll be stocking 200+ units for immediate delivery.

Auto Dynamic is the largest engine remanufacturer in the Rocky Mountain region and has been in business for over 30 years. They remanufacture domestic, foreign and marine engines.

Their decision to add remanufactured transmissions to their product line wasn't one they took lightly. Terry Dunn, president and owner, looked for the highest quality product to match the quality they offer with their engines. Their outside sales force covers Wyoming, Colorado, and portions of Nebraska and Utah.

Their motto? "If it isn't good enough for our own vehicles, then it isn't good enough for our customers." And they back their engines with a 3-year, unlimited-mileage warranty. For more information about Auto Dynamic, visit them on line at www.autodynami-engine.com.



Superior Announces Accumu-Seal™ Dual Use Piston Replacement

Superior Transmission Parts is pleased to announce their new Accumu-Seal™ dual use piston replacement package, Superior part #K089. This new kit fits U-140 through 240 series and U150 through 250 series Lexus and Toyota automatic transaxles.

Superior's Accumu-Seal™ technology gives your build a simple solution to finally seal the bores of your worn Toyota and Lexus valve body castings.

Leaks are common on the piston and bore of the C0, C1, and B1 on the U150-250 series, and the B1 and C2 piston and bore on the U140-240 series units. The loss of circuit pressures can cause burnt direct clutches; flairs on the 2-3 shift when hot (after 20 minutes or so); 2nd, 4th and 5th gear shifting problems (U150-250s); reverse slip; and burnt 2nd, 3rd and OD issues (U140-240s).

Each kit includes a new, specially designed and patent-pending Accumulator Buddy™ bore brush, and enough patent-pending pistons and rings to do two 3-piston models or three 2-piston models.

With our new Accumu-Seal™ ringed pistons and Accumulator Buddy™ bore brush, the bores can be cleaned and surface-prepped to accept the new pistons with Teflon® sealing rings. Available at your local parts distributor, just tell them "I want my Superior!"

For more information, visit Superior on line at www.superior-transmission.com, or call them, toll free, at 800-451-3115.

MAHLE Clevite Receives Preferred Partner Award from Jasper Engines

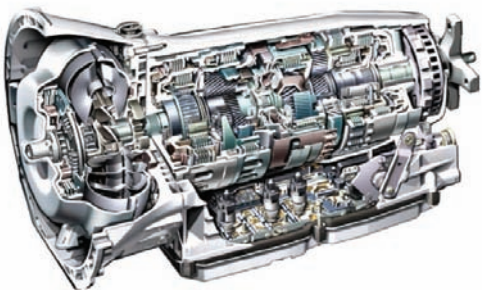
MAHLE Clevite Inc. has received the 2008 Preferred Partner award from Jasper Engines and Transmissions. The 2008 Preferred Partner award recognizes MAHLE Clevite for its excellence in quality, service, technical assistance, billing, shipping and packaging. The award was presented to MAHLE Clevite during the Jasper 22nd Annual Preferred Partners Banquet on Thursday, September 10, 2009.

“It’s an honor to be recognized as a Preferred Partner by Jasper Engines and Transmissions for our achievements in quality and overall outstanding performance,” said Ken Carter, national sales manager – US and Canada. “This award is a testament to our hard work in these areas, as we continue to provide the best for our partners.”

The MAHLE Group is among the top 30 automotive suppliers globally and is the world market leader for combustion engine components, systems and peripherals.

For more information about MAHLE Clevite and its brands, visit www.mahleclevite.com, or contact your local representative.

CORTECO Introduces Mercedes 722.9 Kits



CORTECO is pleased to announce the release of TransTec® kits 2533 and 2536. Both overhaul kits cover the 2005-up Mercedes 722.9 series 7-speed transmission found in several late model Mercedes-Benz vehicles.

Kit 2533 contains all the necessary sealing components, including the metal and rubber bonded intermediate plate and extension housing gaskets. Kit 2536 comes without the intermedi-

ate plate and extension housing gaskets.

Featured Components

TransTec® Number	Description
B33394	Pan Gasket, Molded Rubber
B29257	Front Seal
B29258	Rear Seal 2WD
B37131	Adapter Housing Seal (AWD)
B15456	Pump O-Ring
B10385	Intermediate Plate Gasket
B10386	Extension Housing Gasket
3525	Sealing Ring Kit

For more information on this or any other TransTec kits, visit them on line, at www.TransTec.com.

LKQ Corporation Acquires Greenleaf Auto Recyclers, LLC from Schnitzer Steel Industries, Inc. and Sells Some of Its

Retail Oriented Self-Service Recycling Businesses

LKQ Corporation (Nasdaq: LKQX) recently announced that it has acquired Greenleaf Auto Recyclers, LLC ("Greenleaf") from Schnitzer Steel Industries, Inc. ("SSI") (Nasdaq: SCHN). Greenleaf is the entity through which SSI operated in the late model automotive parts recycling business.

In addition, SSI has acquired from LKQ four retail oriented self-service recycling facilities in Oregon and Washington. LKQ also sold certain business assets to SSI related to two self-service facilities in Northern California and a self-service facility in Portland, OR. LKQ will close the two self-service facilities in Northern California and convert the self-service operation in Portland, OR to a wholesale recycling business.

LKQ has also agreed, subject to customary closing conditions, to sell SSI two self-service recycling facilities in Dallas, TX with an anticipated closing date in mid-January 2010.

Terms of these transactions were not disclosed.

LKQ Corporation is the largest nationwide provider of aftermarket collision replacement products, recycled OEM products and refurbished OEM collision replacement products such as wheels, bumper covers and lights which are used to repair light vehicles. LKQ operates approximately 280 facilities offering its customers a broad range of

replacement systems, components, and parts to repair automobiles and light, medium and heavy-duty trucks.

Superior Announces New 722.6 Endplay Adjustment Shim Package



Superior Transmission Parts, Inc. has just introduced its new 722.6/NAG1 Endplay Adjustment Shim Package, Superior P/N K090.

The Endplay Adjustment Package contains enough shims to adjust three transmissions for both input and output shaft endplay.

Until the introduction of Superior’s K090 package, there was no provision to adjust even the front input shaft’s endplay without resetting the unit’s rear endplay. Superior’s kit includes specially developed input shaft shims (IS shims) that allow you to make minor adjustments to just the input shaft, even when the rear endplay is good to go.

Each kit contains:

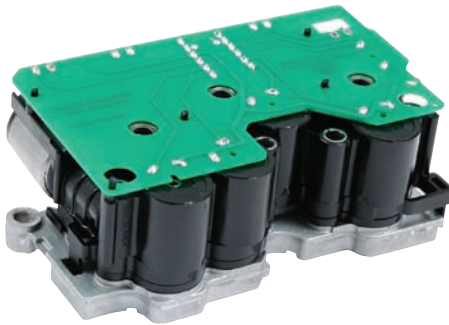
- 3 sets of four input (shims IS) in four sizes
- 3 sets of four output (shims OS) also in four sizes

That’s a total of 24 shims! Detailed instructions are provided to help you set the endplay quickly and accurately. This package allows you to adjust both endplays correctly when you change planetary gearsets or other hard parts.

You’ll save time because you won’t have to wait a week or more while your local car dealer special-orders the rear shims. And you’ll never have to settle for releasing a unit that isn’t set to spec. The K090 is a cost effective, simple solution for a complex unit.

Order your 722.6/NAG1 Endplay Adjustment Shim Package, Superior P/N K090, from your favorite parts distributor today.

Sonnax Reconditioned Solenoid Blocks for 5R55N/W/S



Rebuilders now have a no-hassle option of replacing worn or contaminated 5R55N/W/S solenoid blocks. Sonnax is now offering reconditioned solenoid blocks for these units:

Application	Part Number
5R55W/S 2004-up	56954L
2002-2003	56954K
5R55N (coming soon)	56954N

The improved design of these reconditioned solenoid blocks features a new, integrated, printed circuit board in place of the OEM circuit assembly and eliminates fatigue failures common to the ribbon cable inside the OEM circuit assembly.

In addition, the integrated circuit board's soldered connections provide a more secure interconnection than the OEM, barbed, press-fit connection, for greater durability. All re-conditioned solenoids are 100% tested. Visit www.sonnax.com for more information.

EXPO - To Go, Or Not To Go...

by Steve Glassinger

It's the time of year again to decide if you're going to the ATRA Powertrain Expo. Money is tight, and business is not what it used to be. Are there any new ideas, or any new products, that justify the expense?

As a manufacturer we ask ourselves the same kind of questions and probably come up with about the same answers. After weighing all the options we decided that we cannot afford not to go. This is the biggest transmission-specific trade show in America. Nothing else comes close for the transmission industry: not SEMA or NADA

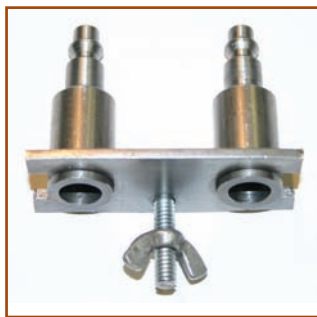
or anything else.

As a company with over 20 years in this industry, we choose not to stagnate. Obviously there's not much we can do about the economy, but we can change how we react to it. We can refuse to participate in this recession any longer. We can refuse to give into the atmosphere of fear that has been created. Fear is just as harmful to our businesses as falling stock prices. When you stop training, stop learning and stop introducing yourself to new ideas, theories, practices and products you will not be able survive the new changes in today's business environment. Simply put, you cannot keep doing the same old things and expect a different outcome!

So we will be at this year's EXPO. And we will be introducing all our new products there. Did you know that Ford is moving to six speed transmissions, like the 6R60, 6R75, 6HP26, 6R140, and 6R80? G-TEC will introduce brand new push-on adapter sets to fit the new transmissions to our Heated Cooler Line Flusher at the EXPO. We also will introduce the adapters for the 6L80E (Hummer and the new Corvette).



Ford Super Duty



Late GM

You can come by our booth for a demonstration of our new wireless transmission shifter which is about the size of a cell phone and makes other shifters look bulky and antique. You can slide this new shifter in your shirt pocket without four foot of wire hanging out the window.



G-TEC Touch Screen 2



Computer Stand

If you don't come, you would also miss G-TEC's all new computerized controller and data acquisition system to fit any dyno. It makes the dyno practically runs itself!

We will have many other products there as well, and remember we are just one of a number of exhibitors on the floor. Why stay at home with your head under a valve body cover with all there is to see and learn at this year's EXPO? The great thing about this year's EXPO is that you get two shows for the price of one! I hope to see you there. We all need to support each other to get through these tough times.

Transtar's 2009 Expansion Continues

Beginning Monday, October 5, 2009, even more customers will be able to count on Transtar, the premier provider of world-class driveline solutions, as they expand into two additional locations. On that day, Transtar opens its doors for business in Nashville, Tennessee, and Boise, Idaho, which represent their third and fourth new markets this year.

"We are completely focused this year on growing our business and providing opportunities for even more customers to benefit from our world-class customer service and expanding product line," states Neil Sethi, group vice president, Transtar Distribution Group. "With these facilities, our comprehensive inventory will now be within reach of hundreds of new customers with

multiple same-day deliveries.

"I am proud that even during this difficult economic situation we have been able to continue on a path of significant growth," Sethi continues. "Both our Columbus and Oklahoma City branches, which opened earlier this year, have experienced considerable success, and we believe that we will see the same in our new locations."

"Our expansion this year has been driven by customer feedback, both personally and through third-party research," reports Tom DeMille, vice president of sales and branch operations. "Through these efforts, we know that many markets still have a void in quality parts and services within our industry, and we are currently evaluating the possibility of expanding into several new locales yet this year and beyond."

For more information about Transtar Industries, visit them on line at www.Transtar1.com.

Shop Lift™: Changing the Way You Handle Loads



Shop Lift™ portable lifting device

A&H Engineering and Manufacturing, Inc. offers the Shop Lift™: a uniquely engineered, ergonomic solution for handling heavy materials in a confined space. Shop Lift™ is an economical yet rugged device, built to fit through most doorways, carrying up to 600 pounds and delivering it safely.

With a gross weight of 700 lbs. and small footprint of only 28" wide x 72" high x 61" long, this compact yet powerful device protects workers and loads alike. Plus, there's none of the odor from propane tanks and virtually none of the noise usually associated with conventional forklifts.

Driven by a 12V electric-powered hydraulic pump with built-in battery and charger, Shop Lift™ features standard 18" long sturdy steel forks with 9" load center, adjustable from 8"-18" wide and



One of the many uses for Shop Lift™ is tool or mold loading in machine shops, especially when space is limited.

with tilting to 15°, capable of elevating a load up to 51" off the floor, with a reach-in capacity of 28".

Every type of load, including pallets, round bar stock, molds, tooling, crates, heavy workpieces, even sensitive electronic or medical equipment, can be transported safely and easily by one operator using the onboard pendant control.

The standard Shop Lift™ has a suggested retail price of \$3350 and can be shipped in 30 days. Custom models can be built on request.

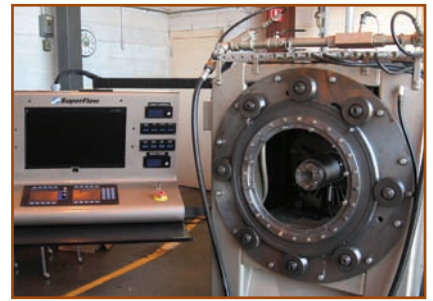
For complete literature, full specifications or more information, call toll free, 1-800-554-2342, or visit them on the web at www.ahtooling.com.

New WinDyn Upgrade from SuperFlow

According to SuperFlow Technologies Group, the new WinDyn software upgrade for transmission dynamometers is accurate, economical and easy to use. Operators are no longer limited to using one type of input sensor, but now have a broader range to monitor customized test data.

With the 16 Bit ADC (Analog to Digital Converter) data acquisition software, the new WinDyn system reads, displays and records solenoid voltage and current — for up to 12 solenoids at a time — for improved data analysis. Four thermocouple inputs measure temperature of the cooler flow circuit and document heat changes and transfers throughout the transmission.

A new compact pendant arm design saves shop space, and it reduces operator time because test setup is simple and easy. In addition, WinDyn can be retrofitted to aging systems giving operators an affordable way to enhance their testing capabilities without the time and expense of purchasing a new machine.



WinDyn's user-friendly interface operates on computers running Microsoft® Windows® operating systems. Test data is displayed in real time on a completely customizable digital display. Operators can also use a playback mode to review saved tests, or compare multiple tests with an automatic graphing feature. The system can be configured for mag pickup or TTL input. It's also expandable for future mode upgrades and network ready.

For more information, visit Superflow Technologies Group on line at www.superflow.com.

VBX Releases New Catalog CD-Rom!

VBX is pleased to announce the much anticipated release of Volume 2 of their Product Information Catalog on CD-Rom. In keeping with the general format of Volume 1, Volume 2 contains detailed information regarding their extensive line of GUARANTEED Remanufactured Valve Bodies and also features an updated listing of their International Distributors.



According to Tim LaCerra, President, "If you have ever experienced the frustration of trying to identify a particular Valve Body, our Product Information CD will become an indispensable identification tool for you. It is designed with clear, concise photographs, descriptions written in laymen's terms, and it takes the guesswork out of identifying the multitude of subtle changes that have occurred in valve bodies over the years."

For information on how to obtain this valuable resource for your shop, please contact VBX toll free 1-866-2GET-VBX.

